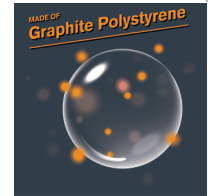


CHROME GPS

PROFESSIONAL GRADE GRAPHITE INSULATION

Powered by
R-5 GPS
Technology!

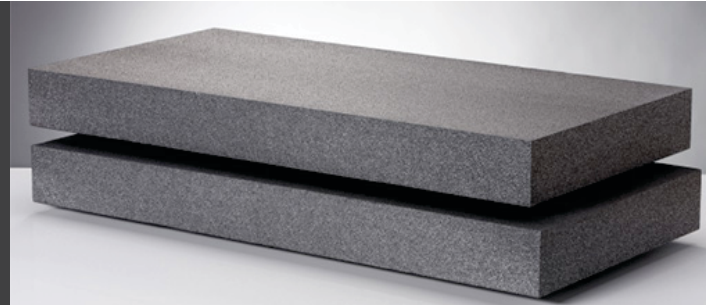


Introducing Chrome GPS™ — a premium, professional grade rigid insulation that delivers higher long-term R-value and more value for the money than regular XPS insulation!

High-performance Chrome GPS™ is powered by graphite enhanced polystyrene (GPS). Distinguished by its distinctive silver/gray color, GPS is comprised of many small pockets of air within a polymer matrix containing graphite. The graphite reflects radiant heat energy like a mirror and increases the resistance GPS has to the flow of heat (or R-value) by up to 20% when compared to conventional EPS.

CHROME GPS™ IS PROFESSIONAL GRADE.

- **Delivers R-5 per nominal inch*** in both low and medium density applications. Its higher R-value means a thinner profile, which also means lower freight and installation costs.
- **Eliminates all thermal bridging** and also powers up when it gets colder, delivering even more R-value.
- **Resistant to aging and decay**, delivers the highest true R-value performance with no loss of R-value over time. It also offers high resistance to normal soil moisture.
- **Breathable and semi-permeable**, this high performance insulation reduces the risk of mold, rot and structural damage often associated with condensation and long-term water retention. It's also GREENGUARD certified for superior indoor air quality.
- **Uses up to 30% less foam** than other insulations, which means a smaller carbon footprint and a contribution to LEED certification.



TECHNICAL PROPERTIES

Property	Chrome GPS™ 15	Chrome GPS™ 25
Compressive Strength (PSI, 10% deformation)	14	25
Thermal Resistance* frz @75	5	5
Water Vapor Permanence	3.5 perms	2.5 perms
Water Absorption	1.1	1.1
Limiting Oxygen Index	24	24
Flame Spread Index	< 5	< 5
Smoke Developed Index	< 25	< 25

*per nominal inch (1.06")

Available Panel Sizes & Thicknesses

Standard Sizes: 4' x 8' (1220 mm x 2440 mm)

Standard Thicknesses: 1" (25 mm), 1.5" (38 mm), 2" (50 mm), 3" (75 mm)

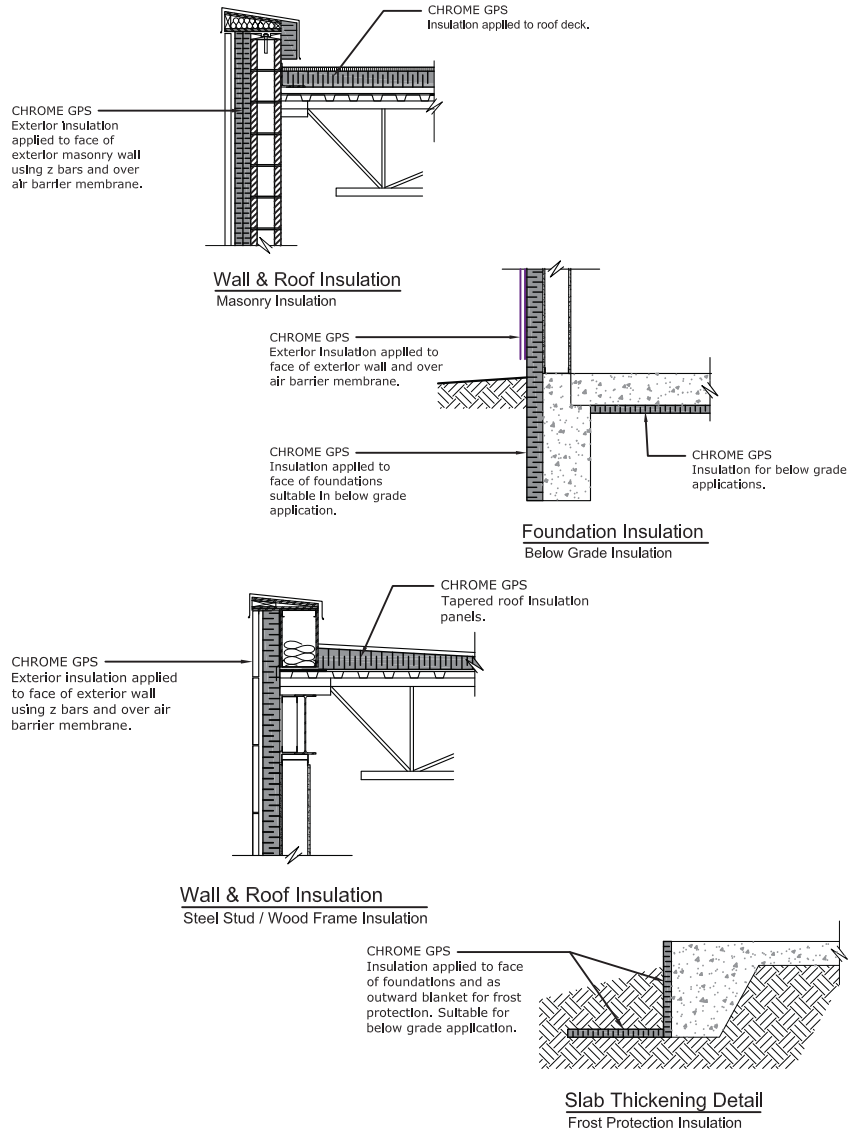
Custom dimensions, thicknesses and profiles available upon request.

Installation Recommendations

Please contact your local Chrome GPS manufacturer for recommended installation procedures and guidelines for Chrome GPS.

Caution: Protect from Fire & Heat

Chrome GPS™ is self-extinguishing, however, it must be protected from open flame and excessive heat. Solar energy compounded by external reflective surfaces can create excessive heat build-up within insulation products made from GPS Neopor® foam, as well as produce minor surface deformation. Protect from concentrated reflected sunlight or prolonged solar exposure.



For more information, email us at info@logixbrands.com or call your local Chrome GPS™ manufacturer. below.

Form Systems Inc.
P.O. Box 16923
Wichita, KS
US 67216
888.838.5038
FormSystemsInc.com

Beaver Plastics Ltd.
7-26318 TWP Rd. 531A
Acheson, AB
Canada T7X 5A3
888.453.5961
BeaverPlastics.com

Form Solutions
840 Division St.
Cobourg, ON
Canada K9A 5V2
888.706.7709
FormSolutions.ca

Perma R Products Inc.
2604 Sunset Dr.
Grenada, MS
US 38901
106 Perma R Rd.
Johnson City, TN
USA 37604
800.647.6130
PermaRProducts.com

Progressive Foam
Technologies Inc.
6753 Chestnut Ridge
Rd.
Beach City, OH
US 44608
800.860.3626
ProgressiveFoam.com

AMC Foam
Technologies
35 Headingley Rd.
Headingley, MB
Canada R4H 0A8
877.789.7622
AMCFoam.com

A PRODUCT BY

LOGIX
BRANDS
LogixBrands.com