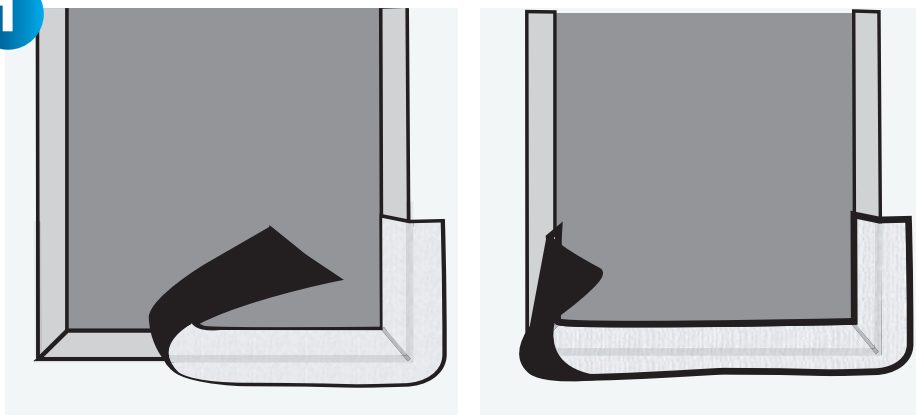


PERMA “R” PRODUCTS

WE’VE GOT YOU COVERED.

FLASHING TAPE INSTALLATION GUIDELINES

1

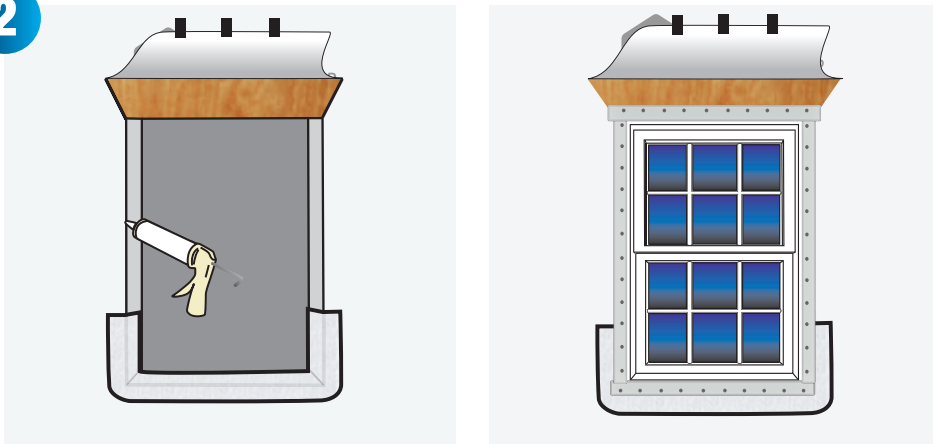


NOTE: If a WRB will be applied after the window and flashing have already been installed, be sure not to fasten the lower edge of the flashing so that the WRB may be slipped underneath the flashing in weatherboard or shingle lap fashion (i.e., top layer overlapping bottom layer).

ProTak® Stretchable Flashing Tape

Prepare sill flashing by cutting ProTak® Flashing tape at least 12” longer than the width of the rough opening. Install sill flashing by removing the release paper, centering sill flashing on sill framing stud, and adhering into rough opening. The back edge of ProTak® should extend to inside edge of sill framing stud and at least 6” up each jamb framing stud. (Sill flashing should not wrap onto the inside of wall.) DO NOT stretch material along the sill or jamb. When Building Wrap or conventional building paper is used as a weather-resistive barrier (WRB) over wall sheathing prior to window and flashing installation, ProTak® should be applied over the WRB after it has been properly cut and folded in and around the window rough opening.

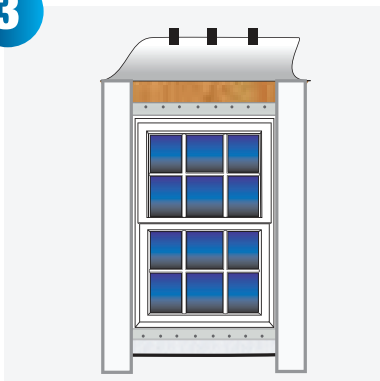
2



Window and Door Installation

Before installing the window, either (A) apply a continuous bead of sealant to the backside (interior) of the mounting flange near the outer edge, or (B) apply a continuous seal to the rough window opening at a point to assure contact with the backside (interior) of the mounting flange. DO NOT seal along bottom. Install window according to manufacturer’s installation procedures. Use of a premium sealant is recommended.

3



Side Jam Flashing

Utilizing a roller to provide firm, consistent pressure, apply PermaTak® window flashing along vertical sides of the opening. Flash over the side window flanges. Extend the flashing a minimum of 3” beyond the sill flashing already in place and extend the flashing you’re using a minimum of 3” beyond the top of the opening, so that it projects beyond the head flashing to be applied later.

DISCLAIMER: The information presented herein has been compiled from sources considered to be accurate and reliable but is not guaranteed to be so. In practice, the differences in materials, substrates, storage conditions, actual site conditions and other factors outside of Perma “R” Products’ control are such that Perma “R” Products assumes no liability, nor makes any warranty, express or implied for such information, recommendations or instructions related to its products. It is the user’s responsibility to determine the suitability of any material for specific purposes and to adopt such safety precautions as may be necessary.



permarproducts.com

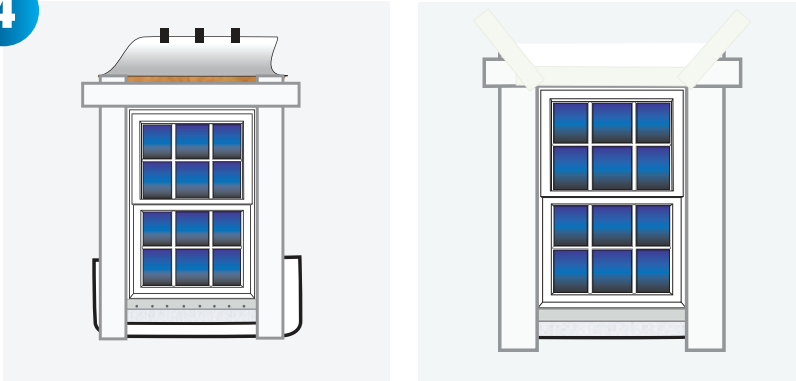
800-647-6130

PERMA “R” PRODUCTS

WE’VE GOT YOU COVERED.

FLASHING TAPE INSTALLATION GUIDELINES, CONT.

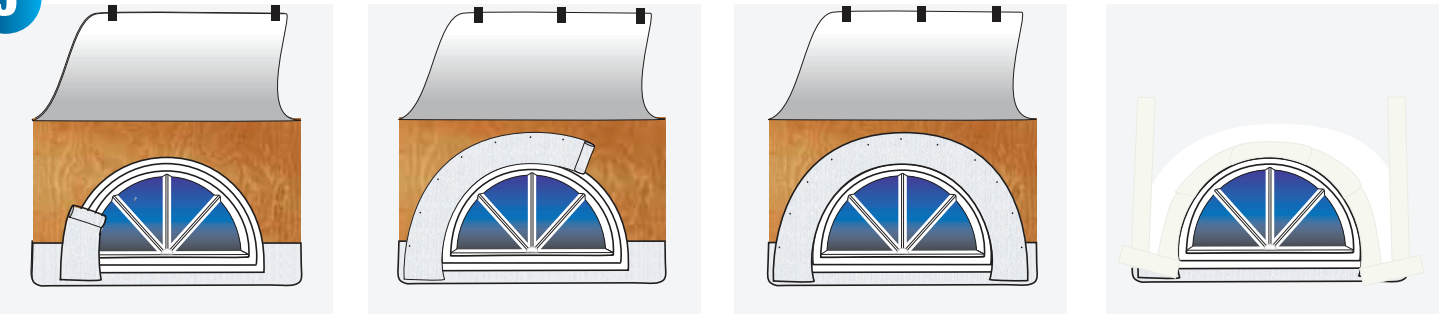
4



Head Flashing

Affix the bottom of the head flashing over the mounting flange. Be sure to extend the flashing beyond each jamb flashing. Secure in place by applying pressure. Unattach building wrap and apply over head flashing as shown. Tape all seams and joints.

5



Circular Windows

Follow above instructions for proper installation prior to head flashing installation. Install circular-top windows according to window manufacturers installation guidelines, then follow instructions below to complete the process.

Measure the circular portion of the window and add 12” to this number. Cut flashing to this length for the head flashing. Remove approximately 20” of release paper and position flashing tightly along the first edge of round window; press firmly into place.

Continue removing release paper and conform PermaTak® along entire circular portion of window. Use Perma R Products Sheathing Tape or mechanical fasteners (i.e. nails, staples, or screws) to temporarily hold top edge of head flashing to wall. PermaTak’s adhesive bond will strengthen over time. Both ends of head flashing should overlap jamb flashings by at least 6”.

Note: This recommendation refers to the most commonly used types of windows (surface mounted). For other types of frames, special attention should be paid to window manufacturer instructions.

